



MC Series Three Phase Asynchronous Induction Motor (Cast Iron Housing)

INTRODUCE

MONTROLI™ MC Series three-phase asynchronous induction motors are made to IEC34-1 and JB/T8680.1-1998 Standards, also up to the international latest design technology. The power range of cast iron motor is from 0.18kw up to 315kw in 24 frame sizes from 63 up to 355 to satisfy variable applications.

MOTOR FEATURES

- * Cast iron housing
- * Corrosive-resistant & vermin resistant
- * Weather-proof, hose-proof & dust-proof
- * Low power consumption
- * Minimize vibration
- * Quiet operation
- * High efficiency
- * High power factors
- * High torque with smooth acceleration & low current
- * Reliable performance
- * Compact size & light weight
- * Good appearance
- * Superior life
- * Ease of maintenance



OPERATING CONDITIONS

- * Ambient temperature : $-15^{\circ}\text{C} < q < 40^{\circ}\text{C}$.
- * Standard voltage supply: 3 Phase, 415V/50Hz (380V~440V and 60Hz are available on request).
- * Protection class : Montrolit™ motors come with standard IP55 protection class. (Other degree of protection are available on request.)
- * Insulation class : Montrolit™ motors meet Class F insulation (temperature limit 145°C), the motors are designed to operate within Class B limits (120°C) to ensure long life and reliability. (Motors with Class H (125°C) insulation are available on request.)
- * Cooling method : TEFV (Totally-Enclosed Fan Ventilated) in accordance with code IC 0141 of IEC and BS4999 Standards.
- * Duty : BS4999 S1 continuously running duty with a temperature rise not exceeding 80°C .
- * Connection : Star-connection for up to 3KW, delta-connection for 4KW and above.



ISO9001 CE



Distributed by:



THONG FATT JAYA MACHINERY HARDWARE SDN. BHD.

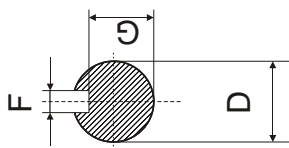
同發機械五金有限公司 (176024-V)

707-709, Jalan Kuala Kangsar, Taman Tasek Jaya,
31400 Ipoh, Perak, Malaysia.
Tel: 00-605-5468 659, 5455 751, 5479 196, 5454 107
Fax: 00-605-5482 282, 5474 753
Email: tfjaya@streamyx.com / tfjaya@tm.net.my
Website: <http://www.thongfattjaya.com.my>

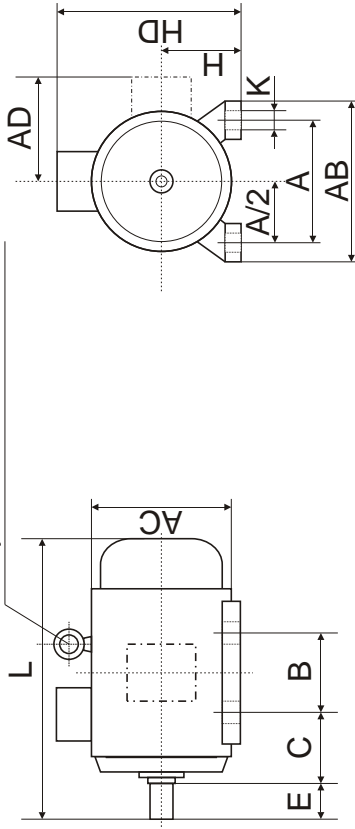
Model	Output Power		Full Load				75% Load		50% Load		Tstart / Tn	Ist / In	Tmax / Tn
	(KW)	(HP)	Current (A)	Speed (r.p.m.)	Eff. (%)	Power Factor	Eff. (%)	Power Factor	Eff. (%)	Power Factor			
415V/50Hz Speed 3000 r/min (2 Poles)													
MC-631-2	0.18	0.25	0.53	2720	65.0	0.80	63.1	0.75	60.0	0.69	2.2	5.5	2.2
MC-632-2	0.25	0.34	0.69	2720	68.0	0.81	65.1	0.76	62.0	0.70	2.2	5.5	2.2
MC-711-2	0.37	0.50	0.99	2740	70.0	0.81	69.0	0.76	66.0	0.71	2.2	6.1	2.2
MC-712-2	0.55	0.75	1.40	2740	73.0	0.82	71.2	0.70	70.0	0.72	2.2	6.1	2.3
MC-801-2	0.75	1	1.83	2830	75.0	0.83	73.0	0.77	71.0	0.74	2.2	6.1	2.3
MC-802-2	1.1	1.5	2.58	2830	77.0	0.84	75.1	0.78	73.0	0.73	2.2	7.0	2.3
MC-90S-2	1.5	2	3.43	2840	79.0	0.84	77.0	0.78	74.9	0.76	2.2	7.0	2.3
MC-90L-2	2.2	3	4.85	2840	81.0	0.85	80.0	0.79	79.9	0.76	2.2	7.0	2.3
MC-100L-2	3.0	4	6.31	2870	83.0	0.87	82.0	0.80	81.1	0.77	2.2	7.5	2.3
MC-112M-2	4.0	5.5	8.10	2890	85.0	0.88	83.9	0.83	82.0	0.80	2.2	7.5	2.3
MC-132S1-2	5.5	7.5	11.0	2900	86.0	0.88	84.2	0.83	83.8	0.80	2.2	7.5	2.3
MC-132S2-2	7.5	10	14.9	2900	87.0	0.88	85.8	0.84	84.9	0.78	2.2	7.5	2.3
MC-160M1-2	11	15	21.3	2930	88.0	0.89	86.6	0.84	85.1	0.79	2.2	7.5	2.3
MC-160M2-2	15	20	28.8	2930	89.0	0.89	87.9	0.84	86.4	0.80	2.2	7.5	2.3
MC-160L-2	18.5	25	34.7	2930	90.0	0.90	89.8	0.86	86.8	0.80	2.2	7.5	2.3
MC-180M-2	22	30	41.0	2940	90.0	0.90	88.9	0.86	86.8	0.82	2.0	7.5	2.3
MC-200L1-2	30	40	55.5	2950	91.2	0.90	89.4	0.85	88.5	0.81	2.0	7.5	2.3
MC-200L2-2	37	50	67.9	2950	92.0	0.90	91.0	0.86	90.4	0.82	2.0	7.5	2.3
MC-225M-2	45	60	82.3	2970	92.3	0.90	90.5	0.85	89.7	0.82	2.0	7.5	2.3
MC-250M-2	55	75	101	2970	92.5	0.90	91.3	0.85	91.0	0.82	2.0	7.5	2.3
MC-280S-2	75	100	134	2970	93.0	0.90	91.9	0.86	91.5	0.81	2.0	7.5	2.3
MC-280M-2	90	125	160	2970	93.8	0.91	92.6	0.87	92.2	0.83	2.0	7.5	2.3
MC-315S-2	110	150	195	2980	94.0	0.91	93.1	0.87	93.0	0.83	1.8	7.1	2.2
MC-315M-2	132	180	233	2980	94.5	0.91	93.2	0.87	93.1	0.84	1.8	7.1	2.2
MC-315L1-2	160	220	279	2980	94.6	0.92	93.1	0.88	93.3	0.85	1.8	7.1	2.2
MC-315L2-2	200	270	348	2980	94.8	0.92	94.0	0.88	93.8	0.85	1.8	7.1	2.2
MC-355M-2	250	340	433	2980	95.3	0.92	94.8	0.88	94.0	0.85	1.6	7.1	2.2
MC-355L-2	315	430	544	2980	95.6	0.92	95.0	0.88	94.0	0.85	1.6	7.1	2.2
415V/50Hz Speed 1500 r/min (4 Poles)													
MC-631-4	0.12	0.16	0.42	1310	57.0	0.72	56.1	0.69	51.9	0.55	2.1	5.2	2.2
MC-632-4	0.18	0.25	0.62	1310	60.0	0.73	58.5	0.70	56.7	0.59	2.1	5.2	2.2
MC-711-4	0.25	0.34	0.79	1330	65.0	0.74	62.4	0.73	59.3	0.59	2.1	5.2	2.2
MC-712-4	0.37	0.50	1.12	1330	67.0	0.75	65.3	0.74	62.1	0.63	2.1	5.2	2.2
MC-801-4	0.55	0.75	1.57	1390	71.0	0.75	69.2	0.74	68.6	0.64	2.4	5.2	2.3
MC-802-4	0.75	1	2.03	1390	73.0	0.76	71.7	0.75	70.0	0.67	2.3	6.0	2.3
MC-90S-4	1.1	1.5	2.89	1400	75.0	0.77	73.1	0.75	72.0	0.67	2.3	6.0	2.3
MC-90L-4	1.5	2	3.70	1400	78.0	0.79	76.1	0.76	74.1	0.69	2.3	6.0	2.3
MC-100L1-4	2.2	3	5.16	1430	80.0	0.81	78.0	0.79	75.5	0.69	2.3	7.0	2.3
MC-100L2-4	3.0	4	6.78	1430	82.0	0.82	79.9	0.78	78.5	0.70	2.3	7.0	2.3
MC-112M-4	4.0	5.5	8.80	1440	84.0	0.82	82.9	0.79	81.1	0.70	2.3	7.0	2.3
MC-132S-4	5.5	7.5	11.7	1440	85.0	0.83	83.8	0.81	82.2	0.73	2.3	7.0	2.3
MC-132M-4	7.5	10	15.6	1440	87.0	0.84	85.6	0.82	83.6	0.74	2.3	7.0	2.3
MC-160M-4	11	15	22.3	1460	88.0	0.84	86.8	0.83	85.9	0.75	2.2	7.0	2.3
MC-160L-4	15	20	30.1	1460	89.0	0.85	88.9	0.83	88.5	0.75	2.2	7.5	2.3
MC-180M-4	18.5	25	36.5	1470	90.5	0.86	90.0	0.82	89.5	0.77	2.2	7.5	2.3
MC-180L-4	22	30	43.2	1470	91.0	0.86	90.2	0.84	89.9	0.76	2.2	7.5	2.3
MC-200L-4	30	40	57.6	1470	92.0	0.86	91.5	0.84	90.8	0.77	2.2	7.2	2.3
MC-225S-4	37	50	69.9	1480	92.5	0.87	91.9	0.87	90.3	0.80	2.2	7.2	2.3
MC-225M-4	45	60	84.7	1480	92.8	0.87	92.4	0.87	90.9	0.80	2.2	7.2	2.3
MC-250M-4	55	75	103	1480	93.0	0.87	92.7	0.89	91.2	0.81	2.2	7.2	2.3
MC-280S-4	75	100	140	1480	93.8	0.87	92.4	0.86	91.6	0.80	2.2	7.2	2.3
MC-280M-4	90	125	167	1490	94.2	0.87	93.0	0.86	92.8	0.78	2.2	7.2	2.3
MC-315S-4	110	150	201	1490	94.5	0.88	93.3	0.87	92.8	0.81	2.1	6.9	2.2
MC-315M-4	132	180	240	1490	94.8	0.88	93.8	0.87	93.0	0.81	2.1	6.9	2.2
MC-315L1-4	160	220	287	1490	94.9	0.89	93.9	0.88	93.1	0.81	2.1	6.9	2.2
MC-315L2-4	200	270	359	1490	95.0	0.89	94.1	0.88	93.8	0.82	2.1	6.9	2.2
MC-355M-4	250	340	443	1485	95.3	0.90	94.3	0.88	94.0	0.83	2.1	6.9	2.2
MC-355L-4	315	430	556	1485	95.6	0.90	94.5	0.89	94.0	0.84	2.1	6.9	2.2

Model	Output Power		Full Load				75% Load		50% Load		Tstart / Tn	Ist / In	Tmax / Tn
	(KW)	(HP)	Current (A)	Speed (r.p.m.)	Eff. (%)	Power Factor	Eff. (%)	Power Factor	Eff. (%)	Power Factor			
415V/50Hz Speed 1000 r/min (6 Poles)													
MC-711-6	0.18	0.25	0.74	850	56.0	0.66	53.1	0.66	51.0	0.65	1.9	4.0	2.0
MC-712-6	0.25	0.34	0.95	850	59.0	0.68	56.0	0.68	53.8	0.62	1.9	4.0	2.0
MC-801-6	0.37	0.50	1.30	890	62.0	0.70	60.5	0.69	57.0	0.50	1.9	4.7	2.0
MC-802-6	0.55	0.75	1.79	890	65.0	0.72	63.3	0.71	60.1	0.53	1.9	4.7	2.1
MC-90S-6	0.75	1	2.29	910	69.0	0.72	67.3	0.72	66.3	0.54	2.0	5.5	2.1
MC-90L-6	1.1	1.5	3.18	910	72.0	0.73	70.2	0.72	68.0	0.55	2.0	5.5	2.1
MC-100L-6	1.5	2	3.94	940	76.0	0.75	74.0	0.75	71.0	0.54	2.0	5.5	2.1
MC-112M-6	2.2	3	5.60	940	79.0	0.76	77.1	0.77	75.1	0.60	2.0	6.5	2.1
MC-132S-6	3.0	4	7.40	960	81.0	0.76	78.9	0.77	76.1	0.60	2.1	6.5	2.1
MC-132M1-6	4.0	5.5	9.80	960	82.0	0.76	80.0	0.76	77.5	0.60	2.1	6.5	2.1
MC-132M2-6	5.5	7.5	12.9	960	84.0	0.77	82.1	0.77	80.1	0.60	2.1	6.5	2.1
MC-160M-6	7.5	10	17.0	970	86.0	0.77	83.4	0.77	82.4	0.60	2.0	6.5	2.1
MC-160L-6	11	15	24.2	970	87.5	0.78	86.6	0.78	84.8	0.61	2.0	6.5	2.1
MC-180L-6	15	20	31.6	970	89.0	0.81	88.1	0.82	86.3	0.63	2.0	7.0	2.1
MC-200L1-6	18.5	25	38.6	970	90.0	0.81	89.1	0.82	87.4	0.65	2.1	7.0	2.1
MC-200L2-6	22	30	44.7	970	90.0	0.83	89.8	0.83	88.5	0.68	2.1	7.0	2.1
MC-225M-6	30	40	59.3	980	91.5	0.84	89.2	0.84	88.8	0.69	2.0	7.0	2.1
MC-250M-6	37	50	71.0	980	92.0	0.86	90.5	0.86	89.1	0.75	2.1	7.0	2.1
MC-280S-6	45	60	86.0	980	92.5	0.86	90.8	0.86	90.1	0.79	2.1	7.0	2.0
MC-280M-6	55	75	105	980	92.8	0.86	90.5	0.86	90.1	0.80	2.1	7.0	2.0
MC-315S-6	75	100	141	990	93.5	0.86	92.5	0.86	91.8	0.76	2.0	7.0	2.0
MC-315M-6	90	125	169	990	93.8	0.86	92.6	0.86	91.9	0.76	2.0	7.0	2.0
MC-315L1-6	110	150	206	990	94.0	0.86	93.0	0.86	92.1	0.77	2.0	6.7	2.0
MC-315L2-6	132	180	244	990	94.2	0.87	93.3	0.87	92.8	0.78	2.0	6.7	2.0
MC-355M1-6	160	220	292	990	94.5	0.88	93.6	0.88	93.0	0.79	1.9	6.7	2.0
MC-355M2-6	200	270	365	990	94.7	0.88	93.8	0.88	93.1	0.80	1.9	6.7	2.0
MC-355L-6	250	340	455	990	94.9	0.88	94.0	0.88	93.5	0.81	1.9	6.7	2.0
415V/50Hz Speed 750 r/min (8 Poles)													
MC-801-8	0.18	0.25	0.88	630	51.0	0.61	46.4	0.52	42.1	0.45	1.8	4.0	1.9
MC-802-8	0.25	0.34	1.15	640	54.0	0.61	48.5	0.54	43.2	0.45	1.8	4.0	1.9
MC-90S-8	0.37	0.50	1.49	660	62.0	0.61	57.1	0.57	53.3	0.43	1.8	4.0	1.9
MC-90L-8	0.55	0.75	2.18	660	63.0	0.61	58.5	0.58	54.4	0.44	1.8	4.0	2.0
MC-100L1-8	0.75	1	2.17	690	71.0	0.67	67.2	0.63	63.4	0.45	1.8	4.0	2.0
MC-100L2-8	1.1	1.5	2.39	690	73.0	0.69	71.5	0.61	69.7	0.48	1.8	5.0	2.0
MC-112M-8	1.5	2	4.50	680	75.0	0.69	73.8	0.64	72.7	0.48	1.8	5.0	2.0
MC-132S-8	2.2	3	6.00	710	78.0	0.71	77.1	0.61	76.2	0.49	1.8	6.0	2.0
MC-132M-8	3.0	4	7.90	710	79.0	0.73	78.5	0.62	77.3	0.50	1.8	6.0	2.0
MC-160M1-8	4.0	5.5	10.3	720	81.0	0.73	79.8	0.63	79.1	0.51	1.9	6.0	2.0
MC-160M2-8	5.5	7.5	13.6	720	83.0	0.74	82.2	0.61	81.8	0.53	2.0	6.0	2.0
MC-160L-8	7.5	10	17.8	720	85.5	0.75	85.0	0.63	84.4	0.54	2.0	6.0	2.0
MC-180L-8	11	15	25.1	730	87.5	0.76	86.1	0.66	85.2	0.56	2.0	6.6	2.0
MC-200L-8	15	20	34.1	730	88.0	0.76	87.2	0.66	86.4	0.56	2.0	6.6	2.0
MC-225S-8	18.5	25	40.6	730	90.0	0.76	89.4	0.68	88.2	0.57	1.9	6.6	2.0
MC-225M-8	22	30	47.4	740	90.5	0.78	89.6	0.69	88.6	0.58	1.9	6.6	2.0
MC-250M-8	30	40	64.0	740	91.0	0.79	90.0	0.69	89.1	0.58	1.9	6.6	2.0
MC-280S-8	37	50	78.0	740	91.5	0.79	91.2	0.71	90.1	0.60	1.9	6.6	2.0
MC-280M-8	45	60	94.0	740	92.0	0.79	91.8	0.75	90.8	0.61	1.9	6.6	2.0
MC-315S-8	55	75	111	740	92.8	0.81	91.9	0.78	91.0	0.64	1.8	6.6	2.0
MC-315M-8	75	100	151	740	93.0	0.81	92.9	0.76	91.5	0.65	1.8	6.6	2.0
MC-315L1-8	90	125	178	740	93.8	0.82	92.9	0.76	91.7	0.70	1.8	6.6	2.0
MC-315L2-8	110	150	217	740	94.0	0.82	93.1	0.78	92.9	0.71	1.8	6.4	2.0
MC-355M1-8	132	180	261	740	93.7	0.82	93.1	0.78	92.9	0.71	1.8	6.4	2.0
MC-355M2-8	160	220	313	740	94.2	0.82	93.2	0.79	93.0	0.71	1.8	6.4	2.0
MC-355L-8	200	270	388	740	94.5	0.83	93.8	0.79	93.3	0.72	1.8	6.4	2.0
415V/50Hz Speed 600 r/min (10 Poles)													
MC-315S-10	45	60	100	590	91.5	0.75	90.5	0.65	80.2	0.55	1.5	6.2	2.0
MC-315M-10	55	75	121	590	92.0	0.75	90.9	0.64	80.1	0.55	1.5	6.2	2.0
MC-315L1-10	75	100	162	590	92.5	0.76	91.0	0.65	80.2	0.57	1.5	6.2	2.0
MC-315L2-10	90	125	191	590	93.0	0.77	91.2	0.67	80.2	0.58	1.5	6.2	2.0
MC-355M1-10	110	150	230	590	93.2	0.78	92.0	0.68	80.4	0.60	1.3	6.0	2.0
MC-355M2-10	132	180	275	590	93.5	0.78	92.5	0.69	80.1	0.61	1.3	6.0	2.0
MC-355L-10	160	215	334	590	93.5	0.78	92.5	0.70	80.1	0.62	1.3	6.0	2.0

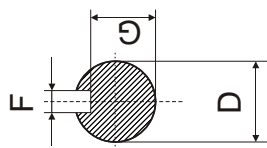
B3~Foot Mounted



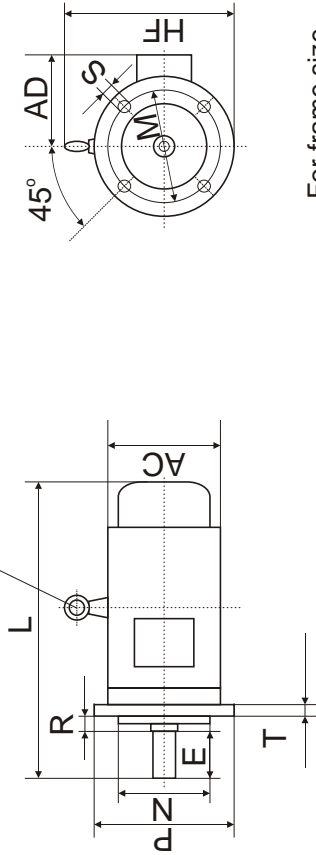
No eyebolt for frame size 63~90



B5~Flange Mounted

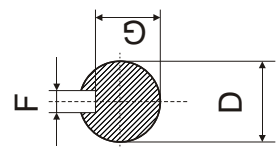


No eyebolt for frame size 63~90

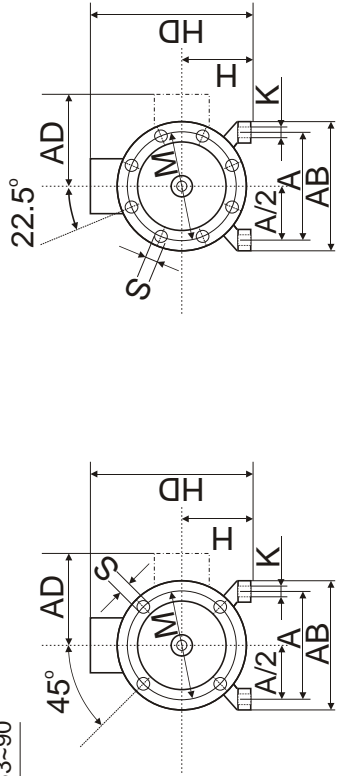


For frame size 63~200

B35~Foot & Flange Mounted



No eyebolt for frame size 63~90



For frame size 225~280

For frame size 225~355

For frame size 63~200