



## *ML Series Single Phase Dual-Capacitor Asynchronous Aluminium Motor*

### INTRODUCE

MONTROLI™ ML Series single-phase dual capacitor asynchronous Motors are made to IEC Standards, also up to the international latest design technology. The power range of ML Series is from 0.18kw up to 3kw in 5 frame sizes from 63 up to 100L to satisfy variable applications.

### MOTOR FEATURES

- \* Aluminium housing.
- \* Corrosive-resistant & vermin resistant.
- \* Weather-proof, hose-proof & dust-proof.
- \* Low power consumption.
- \* Minimize vibration.
- \* Quiet operation.
- \* High efficiency.
- \* High power factors.
- \* High torque with smooth acceleration & low current.
- \* Reliable performance & safety.
- \* Compact size, simple construction & light weight.
- \* Good appearance.
- \* Superior life.
- \* Ease of maintenance.

### OPERATING CONDITIONS

- \* Standard voltage supply: 1 Phase, 240V/50Hz (380V~440V and 60Hz are available on request).
- \* Protection class : IP55.
- \* Insulation class : Montrolit™ motors meet Class F insulation (temperature limit 145°C). (Other degree of protection class and insulation class are available on request.)
- \* Cooling method: TEFV (Totally-Enclosed Fan Ventilated).
- \* Ball bearing: NSK, NTN or SKF bearings.

### APPLICATIONS

Suitable for the occasion where the requirements of high starting torque and high over load, such as:

- \* Air compressors
- \* Fans
- \* Machines
- \* Pumps
- \* Medical apparatus & instruments
- \* Etc.



### **DISTRIBUTED BY:**



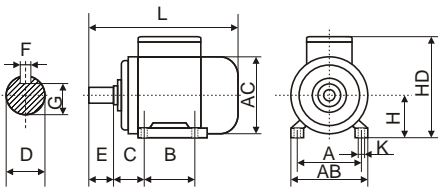
**THONG FATT JAYA MACHINERY HARDWARE SDN. BHD.**

**同發機械五金有限公司** (176024-V)

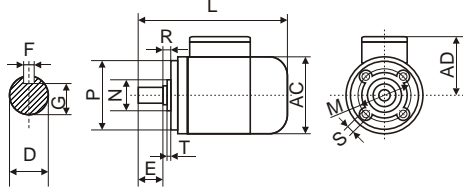
707-709, Jalan Kuala Kangsar, Taman Tasek Jaya,  
31400 Ipoh, Perak. Malaysia.  
Tel: 00-605-5468 659, 5455 751, 5479 196, 5454 107  
Fax: 00-605-5482 282, 5474 753  
Email: tfjaya@tm.net.my / tfjaya@streamyx.com  
Website: <http://www.thongfattjaya.com.my>

Model	Output Power		Current (A)	Eff. (%)	Power Factor	Tstart / Tn	Tmax / Tn
	(KW)	(HP)					
1 Phase, 240V/50Hz Speed 2800 r/min (2 Poles)							
ML711-2	0.37	0.50	2.73	67	0.92	2.3	1.8
ML712-2	0.55	0.75	3.88	70	0.92	2.5	1.8
ML801-2	0.75	1	5.15	72	0.92	2.5	1.8
ML802-2	1.1	1.5	7.02	75	0.95	2.5	1.8
ML90S-2	1.5	2	9.44	76	0.95	2.5	1.8
ML90L-2	2.2	3	13.67	77	0.95	2.5	1.8
ML100L-2	3.0	4	18.20	79	0.95	2.5	1.8
1 Phase, 240V/50Hz Speed 1400 r/min (4 Poles)							
ML632-4	0.18	0.25	1.62	56	0.9	0.4	1.7
ML711-4	0.25	0.34	1.99	62	0.92	2.5	1.8
ML712-4	0.37	0.50	2.81	65	0.92	2.5	1.8
ML801-4	0.55	0.75	4	68	0.92	2.5	1.8
ML802-4	0.75	1.0	5.22	71	0.92	2.5	1.8
ML90S-4	1.1	1.5	7.2	73	0.95	2.5	1.8
ML90L-4	1.5	2	9.57	75	0.95	2.5	1.8
ML100L1-4	2.2	3	13.9	76	0.95	2.5	1.8
ML100L2-4	3.0	4	18.6	77	0.95	2.5	1.8

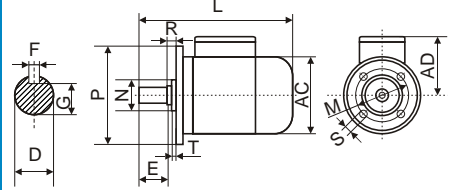
B3-Foot Mounted



B14-Face Mounted



B5-Flange Mounted



Frame Size	Installation Dimensions (mm)																								
	B3						B14					B5					Shaft				General				
	A	B	C	H	K	AB	M	N	P	S	T	M	N	P	S	T	D	E	F	G	R	HD	AC	AD	L
63	100	80	40	63	7	120	75	60	90	M4	2.5	115	95	140	10	3	11	23	4	8.5		180	130	70	230
71	112	90	45	71	7	145	85	70	105	M6	2.5	130	110	160	10	3.5	14	30	5	11		210	145	125	255
80	125	100	50	80	10	160	100	80	120	M6	3	165	130	200	12	3.5	19	40	6	15.5		240	165	135	295
90S	140	100	56	90	10	180	115	95	140	M8	3	165	130	200	12	3.5	24	50	8	20		270	185	145	335
90L	140	125	56	90	10	180	115	95	140	M8	3	165	130	200	12	3.5	24	50	8	20		270	185	145	360
100L	160	140	63	100	12	205	---	---	---	---	---	215	180	250	15	4	28	60	8	24		280	215	170	380