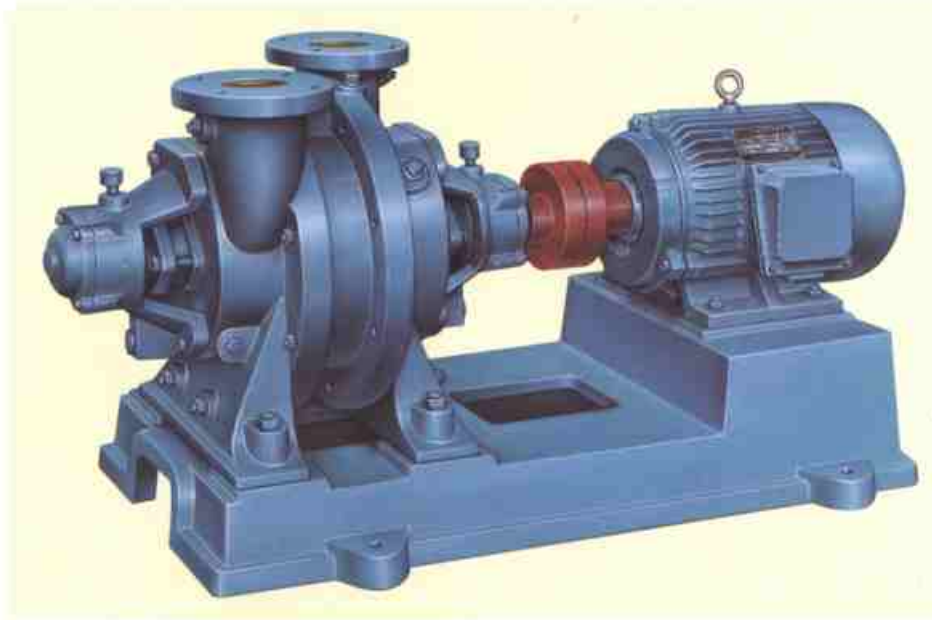




## SZ SERIES WATER CIRCULATION VACUUM PUMP



Used to pump and compress air and other non-corrosive, non-dissolvable and non-solids gas. They are used in suction evaporation, exhaust, concentration and closing tank in mining, chemical, food, petroleum, pharmaceutical, pottery, printing and dyeing, metallurgy industries, etc.

Advantages:

- \* Simple construction.
- \* Low service and maintenance requirements.
- \* Wide range applications of vacuum performance.



**THONG FATT JAYA MACHINERY HARDWARE SDN. BHD.**

**同發機械五金有限公司** (176024-V)

707-709, Jalan Kuala Kangsar, Taman Tasek Jaya,  
31400 Ipoh, Perak, Malaysia.  
Tel: 00-605-5468 659, 5455 751, 5479 196, 5454 107  
Fax: 00-605-5482 282, 5474 753  
Email: tfjaya@streamyx.com / tfjaya@tm.net.my  
Website: <http://www.thongfattjaya.com.my>

## SPECIFICATIONS DATA

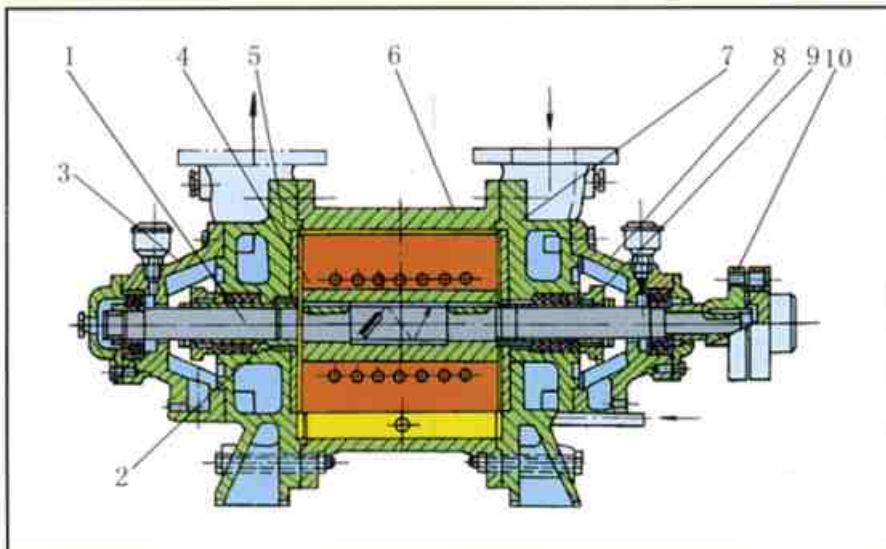
Model	Vacuum Pump					Compressor					Motor Power (kw)	
	Max. Capacity (m <sup>3</sup> /min)					Max. Capacity (m <sup>3</sup> /min)					Pump	Compressor
	Vacuum Degree					Pressure						
	1013hPa	608hPa	405hPa	203hPa	101hPa	0MPa	0.05MPa	0.08MPa	0.1MPa	0.15MPa		
SZ-1	1.5	0.64	0.4	0.12	---	1.5	1	---	---	---	4	5.5
SZ-2	3.4	1.65	0.95	0.25	---	3.4	2.6	2	1.5	---	7.5	15
SZ-3	11.5	6.8	3.6	1.5	0.5	11.5	9.2	8.5	7.5	3.5	30	45
SZ-4	27	17.6	11	3	1	27	26	20	16	9.5	75	90

Model	Speed (rpm)	Exhaustion of Water (L/min)	Pump Body Inner Diameter (mm)	Impeller		Inlet Diameter (mm)	Discharge Diameter (mm)	Max. Vacuum Degree (hPa)	Max. Pressure (Mpa)	Discharge Capacity at 0% Vacuum Degree (m <sup>3</sup> /min)	Vacuum Degree (hPa)	Discharge Capacity at 0Mpa Pressure (m <sup>3</sup> /min)	Weight (kg)
				Outer Diameter (mm)	Width (mm)								
SZ-1	1450	10	230	200	90	70	70	162	0.1	1.45	203	1.45	140
SZ-2	1450	30	230	200	220	70	70	132	0.14	3.3	182	3.3	150
SZ-3	975	70	380	323	320	125	125	81	0.21	10.2	152	10.2	463
SZ-4	730	100	535	450	520	200	150	71	0.21	25	162	25	975

Note:

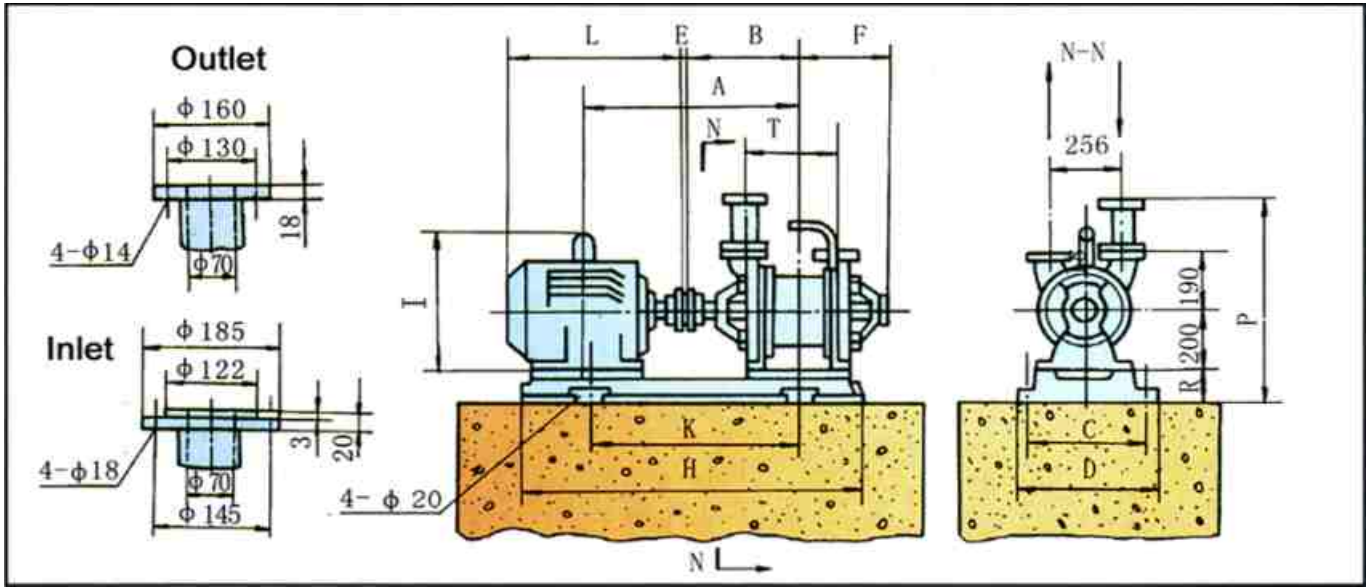
1. Suction capacity of vacuum degree from 40% to 90% and discharge capacity of pressure from 0.5kg/cm<sup>2</sup> to 1.5kg/cm<sup>2</sup>, are variable according to the space between impeller and cover. If do not adjust properly will caused too low capacity especially when low capacity.
2. Pump testing conditions: (1) Water Temperature 15°C; (2) Air Temperature 20°C; (3) Air Relative Humidity 70%; (4) Atmosphere Pressure 760mmHg.
3. Deviation of the above specification data are not over 5%.

## STRUCTURE



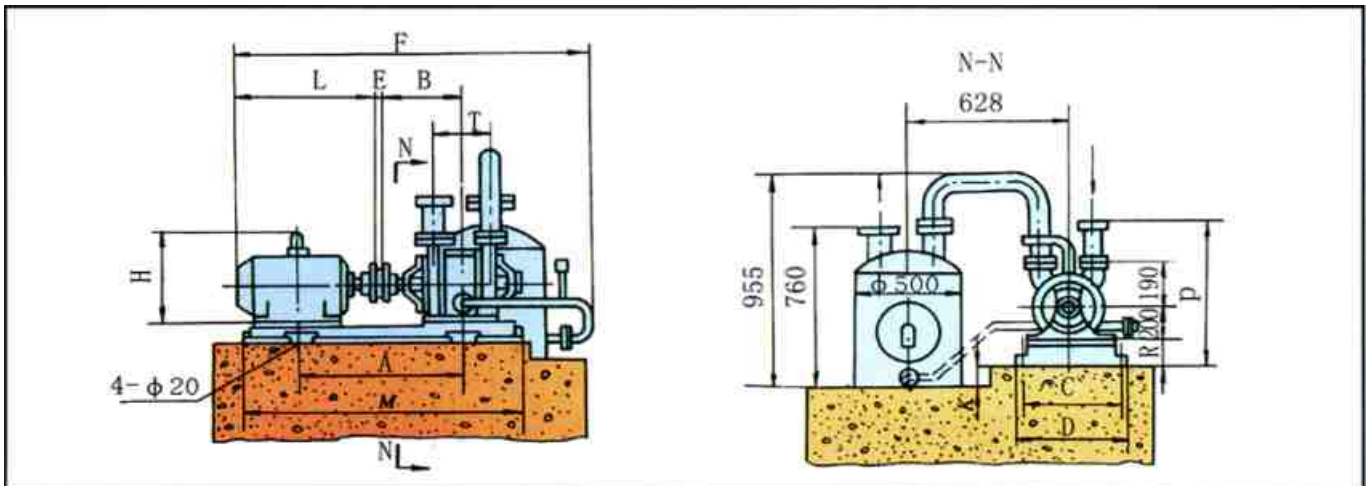
1. Pump shaft
2. Shaft sleeve
3. Rear bearing pedestal
4. Impeller
5. Rear cover
6. Pump body
7. Front cover
8. Front bearing pedestal
9. Packing gland
10. Coupling

## SZ-1 / SZ-2 VACUUM PUMP INSTALLATION DIMENSION



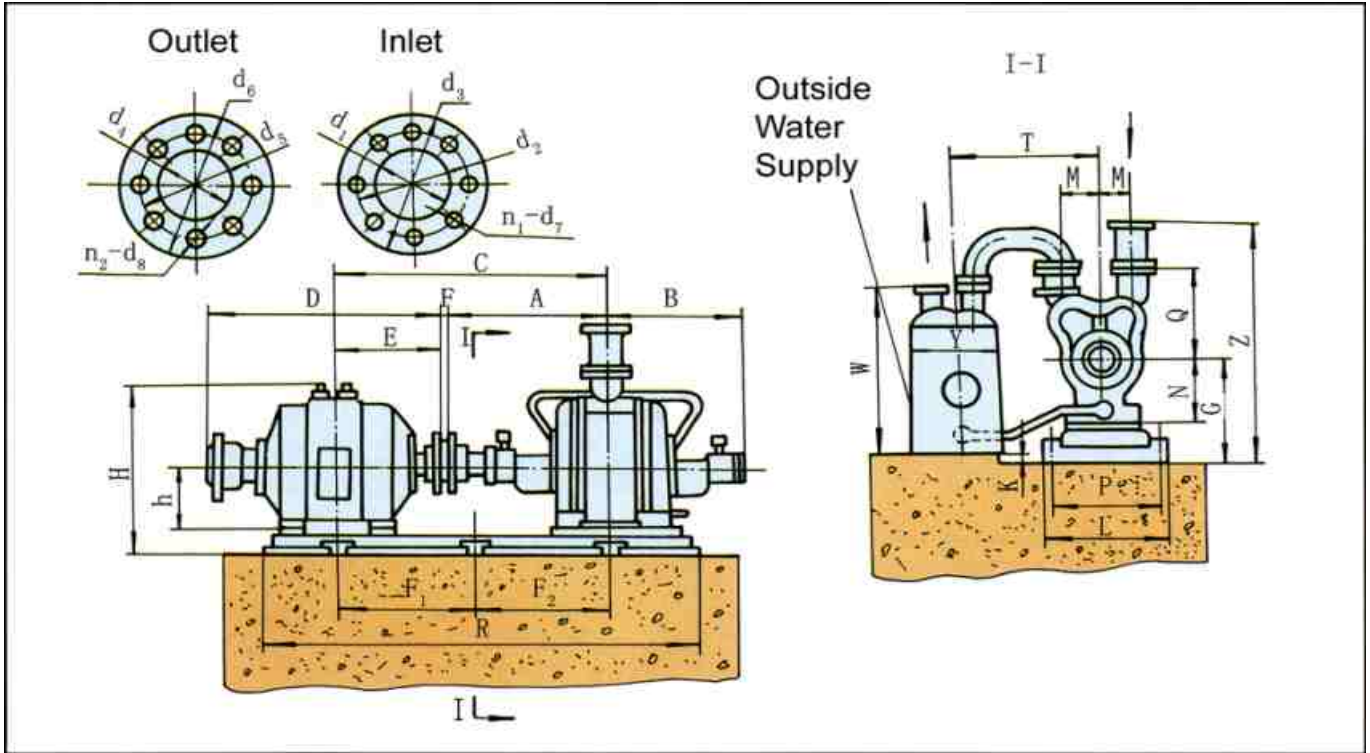
Model	Installation (mm)													Motor Power (kw)
	A	B	C	D	E	F	I	P	R	K	T	H	L	
SZ-1	515	313	450	500	2	280	265	667	183	567	190	830	400	4
SZ-2	651	378	450	500	2	346	315	728	138	651	320	1032	515	7.5

## SZ-1 / SZ-2 COMPRESSOR INSTALLATION DIMENSION



Model	Installation (mm)													Motor Power (kw)
	A	B	C	D	E	F	H	P	R	T	M	L	K	
SZ-1	567	313	450	500	2	1265	315	723	133	190	868	475	110	5.5
SZ-2	716	378	450	500	2	1625	385	710	120	320	1115	645	110	15

## SZ-3 / SZ-4 VACUUM PUMP & COMPRESSOR INSTALLATION DIMENSION



### VACUUM PUMP

Model	Installation (mm)																	
	A	B	C	D	H	F1	F2	G	M	Y	W	T	N	Q	P	L	R	K
SZ-3	766	665	1231.5	863	725	600	800	420	142.5	637	1050	912.5	295	360	640	710	1769	25
SZ-4	912	792	1551.5	1292	1085	980	980	535	192.5	637	1050	864.5	405	465	870	930	2474	60

Model	Installation (mm)												Motor Power (kw)
	Z	d1	d2	d3	d4	d5	d6	n1-d7	n2-d8	F	h	E	
SZ-3	1030	125	200	235	125	200	235	8-18	8-18	3	225	462.5	5.5
SZ-4	1298	175	255	390	150	225	260	8-18	8-18	3	315	636.5	15

### COMPRESSOR

Model	Installation (mm)																	
	A	B	C	D	H	F1	F2	G	M	Y	W	T	N	Q	P	L	R	K
SZ-3	766	665	1301	1018	780	600	800	420	142.5	637	1050	912.5	295	360	640	710	1903.5	25
SZ-4	912	792	1551.5	1292	1085	980	980	535	192.5	637	1050	864.5	405	465	780	840	2474	60

Model	Installation (mm)												Motor Power (kw)
	Z	d1	d2	d3	d4	d5	d6	n1-d7	n2-d8	F	h	E	
SZ-3	1030	125	200	235	125	200	235	8-18	8-18	3	280	532	45
SZ-4	1298	175	255	290	150	225	260	8-18	8-18	3	315	636.5	90