

## CHLS 16 Series

Specification Data



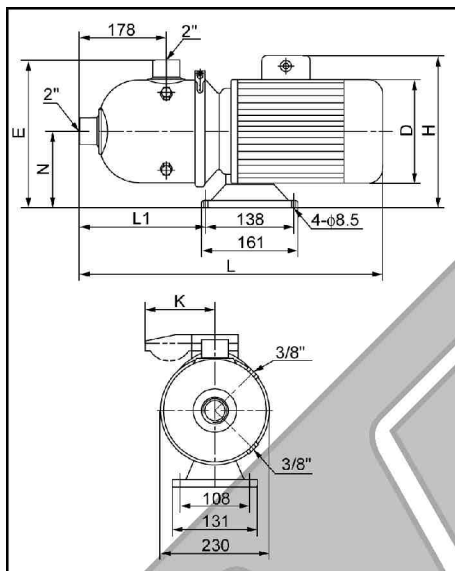
### Pump Key

#### CHL S 16 - 10

- Number of stage X 10: 1 stage
- Flow rate: 16m<sup>3</sup>/h
- S: Wetted parts are made of AISI304/316
- Horizontal Multistage Centrifugal Pump

Model		CHLS 16
Capacity	(m <sup>3</sup> /h)	8~22
Max. Head	(m)	38.5
Max. Working Pressure	(bar)	10
Power	(kw)	1.1~3
	(hp)	1.5~4
Fluid Temperature	(°C)	-15 to +110
Ambient Temperature	(°C)	+40
Max. Efficiency	(%)	62
Pipe Coupling		
Inlet & Outlet (Inner Thread)		2" & 2"
Electric Motor		
Protection / Insulation Class		IP55 / F

### Outline Dimensios



Model	Motor Power		Power Factor cos F	Capacity Q(m <sup>3</sup> /h)							
	kw	hp		8	10	12	14	16	18	20	22
CHLS 16-10	1.1	1.5	0.85	12.5	12	11.5	10.5	10	9	7.5	6.5
CHLS 16-20	2.2	3	0.84	25.5	24	23	22	21	19	17	14.5
CHLS 16-30	3	4	0.87	38.5	37	36	34	32	30	27	23

Model	Dimensions (mm)								Weight (kg)
	L	L1	E	N	D	H		K	
CHLS 16-10	550	280	268	118	170	252	230	100	20
CHLS 16-20	570	280	268	118	180	260	240	100	27
CHLS 16-30	600	270	276	126	195	---	270	---	34

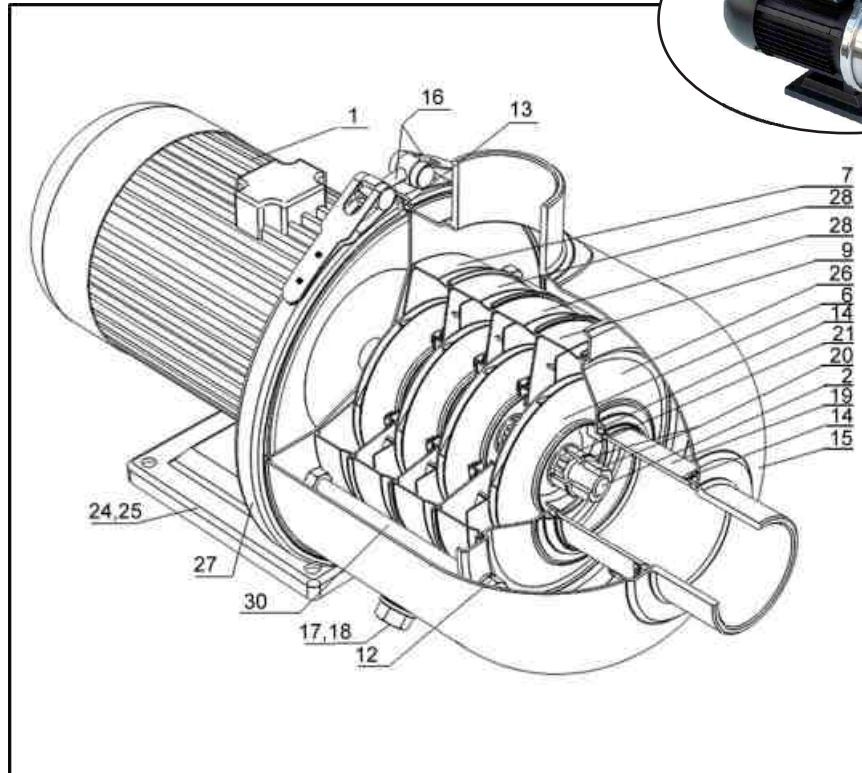
### Selection of Pumps For Various Liquids

Pumped Liquids	Model	CHLS 16
Fresh water		*
Water & glycol mixtures (non-heating)		*
Water & glycol mixtures (heating)		*
Demineralised water & de-ionised water (4<PH<9)		*
Brine(CaCl-brine & NaCl-brine)		*
Impregnation fluid (4<PH<9)		*
Hot water		*
Swimming pool water		*
Alcohol		*
Benzene, naphthalene, toluene,xylene		*
Fertilizer solutions		*
Acids (PH>4)		*
Bases		*
Degreasing fluids		*

### Applications

APPLICATION	CHLS 16
Industrial washing	*
Cooling system	*
Environmental applications	*
Aqua farming	*
Water treatment	*
Fertilizing & metering system	*
Fertilizer & dosing system	*

## CHLS 16 Diagram & Material



No	Descriptions	Material (AISI / ASTM)
1	Motor	
2	Pump Shaft	S. Steel AISI316
6	Impeller	S. Steel AISI304 / AISI316
7	Top Guide Vane	S. Steel AISI304 / AISI316
9	Intermediate Chamber c/w Bearing	S. Steel AISI304 / AISI316
12	Nut M8, Washer 8	S. Steel AISI304 / AISI316
13	O-Ring 207X5	EPDM Rubber
14	O-Ring 66X5	EPDM Rubber
15	Inlet & Outlet Chamber	S. Steel AISI304 / AISI316
16	Nut M6, Screw M6X50	S. Steel AISI304 / AISI316
17	Plug	S. Steel AISI304 / AISI316
18	O-Ring 16X2.5	EPDM Rubber
19	Connector	S. Steel AISI304 / AISI316
20	Nut M12, Washer 12	S. Steel AISI304 / AISI316
21	1 <sup>ST</sup> Stage Impeller Spacer	S. Steel AISI304 / AISI316
24	Base	Cast Iron ASTM25B
25	Nut M8, Washer 8	S. Steel AISI304 / AISI316
26	Clamp Plate	S. Steel AISI304 / AISI316
27	Rapidly-Clamp	S. Steel AISI304
28	Intermediate Chamber Complete	S. Steel AISI304 / AISI316
30	Pull Rod	S. Steel AISI304 / AISI316



**THONG FATT JAYA MACHINERY HARDWARE SDN. BHD.**

**同發機械五金有限公司** (176024-V)

707-709, Jalan Kuala Kangsar, Taman Tasek Jaya,  
31400 Ipoh, Perak, Malaysia.  
Tel: 00-605-5468 659, 5455 751, 5479 196, 5454 107  
Fax: 00-605-5482 282, 5474 753  
Email: tfjaya@streamyx.com / tfjaya@tm.net.my  
Website: http://www.thongfattjaya.com.my