

CHFT 6 Series

Specification Data



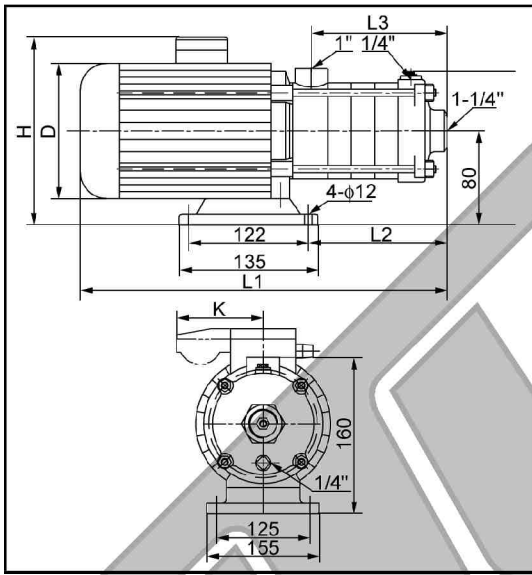
Pump Key

CHFT 6 - 40

- Number of stage X 10: 4 stage
- Flow rate: 6 m³/h
- T: Wetted parts are made of Cast Iron ASTM25B
- Sectional Horizontal Multistage Centrifugal Pump

Model		CHFT 6
Capacity	(m ³ /h)	1~12.7
Max. Head	(m)	42
Max. Working Pressure	(bar)	8
Power	(kw)	1.1~1.5
	(hp)	1.5~2
Fluid Temperature	(°C)	+90
Ambient Temperature	(°C)	+40
Max. Efficiency	(%)	50
Pipe Coupling		
Inlet & Outlet (Inner Thread)	1-1/4" & 1"	
Electric Motor		
Protection / Insulation Class	IP44 / B	

Outline Dimensions



Model	Motor Power		Capacity Q(m ³ /h)					
	kw	hp	1	3	5	7	9	11
CHFT 6-40	1.1	1.5	34	31.1	26.7	21.6	16.4	10.6
CHFT 6-50	1.5	2.0	42	39	33.6	27.7	21.4	13.8

Model	Dimensions (mm)						Weight
	L1	L2	L3	D	H	K	(kg)
CHFT 6-40	440	213.5	162	170	200	100	13
CHFT 6-50	465	239	187.5	180	200	100	14

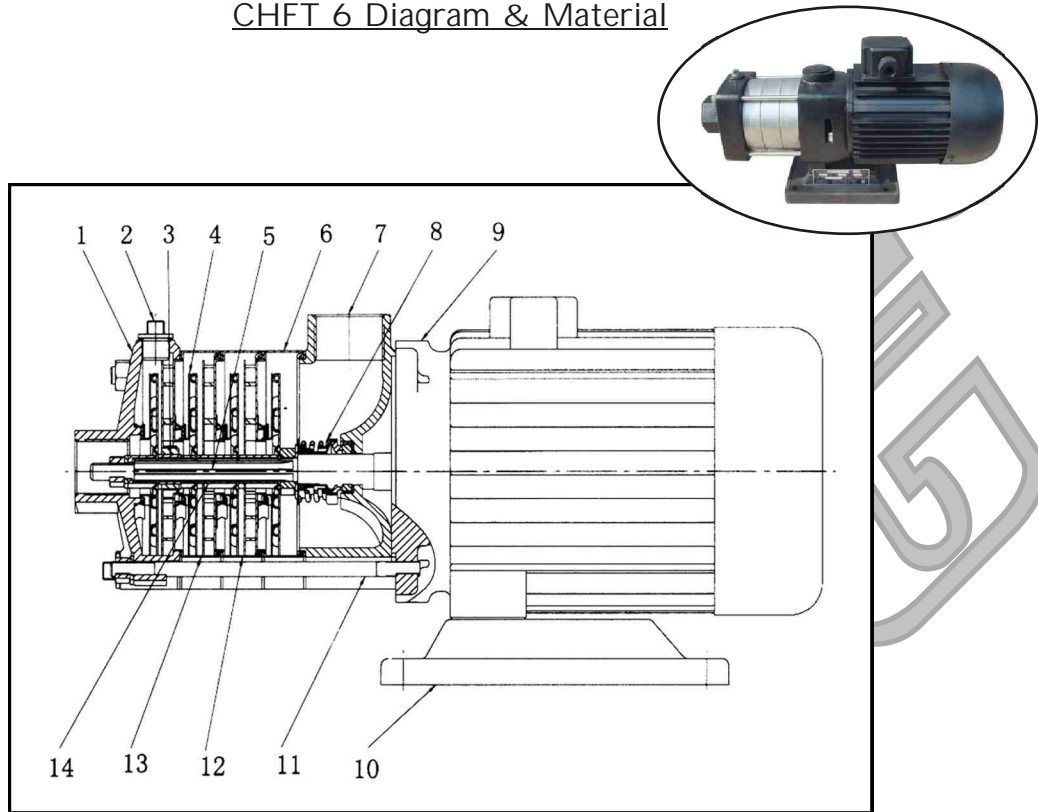
Selection of Pumps For Various Liquids

Pumped Liquids	Model	CHFT 6
Fresh water		*
Water & glycol mixtures (non-heating)		*
Water & glycol mixtures (heating)		*
Demineralised water & de-ionised water (4<PH<9)		*
Brine(CaCl-brine & NaCl-brine)		*
Impregnation fluid (4<PH<9)		*
Hot water		*
Swimming pool water		*
Alcohol		*
Benzene, naphthalene, toluene, xylene		*
Fertilizer solutions		*
Acids (PH>4)		*
Bases		*
Degreasing fluids		*

Applications

APPLICATION	CHFT 6
Industrial washing	*
Cooling system	*
Environmental applications	*
Aqua farming	*
Water treatment	
Fertilizing & metering system	
Fertilizer & dosing system	

CHFT 6 Diagram & Material



No	Descriptions	Material (AISI / ASTM)
1	Inlet Chamber	Cast Iron ASTM25B
2	Plug	S. Steel AISI304
3	Bearing	Tungsten Carbide
4	Impeller	S. Steel AISI304
5	Pump Shaft	S. Steel AISI304
6	Top Guide Vane	S. Steel AISI304
7	Outlet Chamber	Cast Iron ASTM25B
8	Mechanical Seal	
9	Motor End Cover	Aluminium Alloy
10	Base	Cast Iron ASTM25B
11	Pull Rod	S. Steel AISI304
12	Guide Vane	S. Steel AISI304
13	Intermediate Chamber c/w Bearing	S. Steel AISI304
14	Impeller Spacer	S. Steel AISI304



THONG FATT JAYA MACHINERY HARDWARE SDN. BHD.

同發機械五金有限公司 (176024-V)

707-709, Jalan Kuala Kangsar, Taman Tasek Jaya,
31400 Ipoh, Perak. Malaysia.
Tel: 00-605-5468 659, 5455 751, 5479 196, 5454 107
Fax: 00-605-5482 282, 5474 753
Email: tfjaya@streamyx.com / tfjaya@tm.net.my
Website: <http://www.thongfattjaya.com.my>