

# FLUOROPLASTIC CENTRIFUGAL PUMP

## PY Series Immersible Pump

### ◆ APPLICATION

PY Series Immersible Pumps have advantages of quiet operation, easy maintenance and strong corrosion-resistance, are widely used in industries such as chemical, petroleum, treatment of waste water, etc.

PY SERIES



### ◆ FEATURE

The specification is determined in accordance to the length inside the vessel (usually 1-2m). The working section is immersed in the liquid, and the rolling and sliding bearings support the axial and radial forces due to pump operation respectively. This makes the pump run quietly without noise. There is no liquid splash at shaft seal, and a cooling system is provided at seal filler, depending the temperature of liquid, to remove heat with cooling water.

### ◆ PUMP KEY

65 PY - 40

Head: 40m

PY Series Fluoroplastic Immersible Pump

Inlet Diameter: 65mm

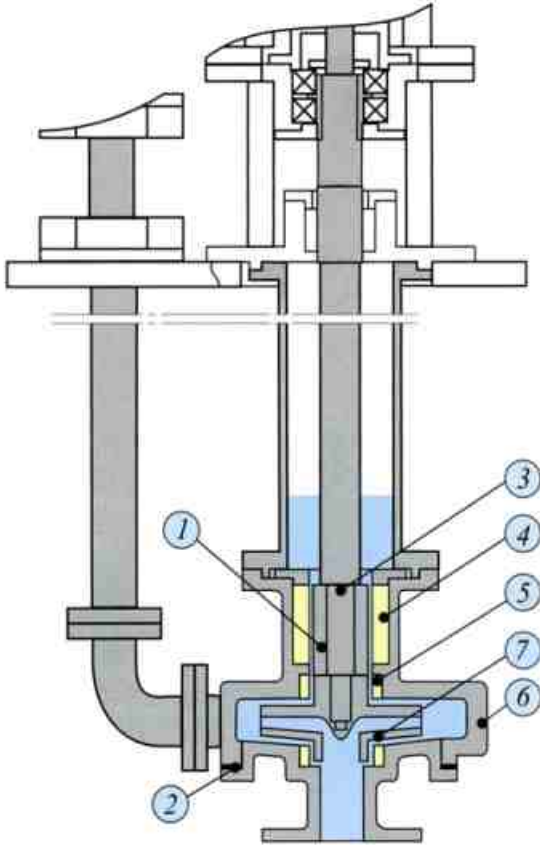


THONG FATT JAYA MACHINERY HARDWARE SDN. BHD.

同發機械五金有限公司 (176024-V)

707-709, Jalan Kuala Kangsar, Taman Tasek Jaya,  
31400 Ipoh, Perak. Malaysia.  
Tel: 00-605-5468 659, 5455 751, 5479 196, 5454 107  
Fax: 00-605-5482 282, 5474 753  
Email: tfjaya@streamyx.com / tfjaya@tm.net.my  
Website: <http://www.thongfattjaya.com.my>

## ◆ STRUCTURE & MATERIAL



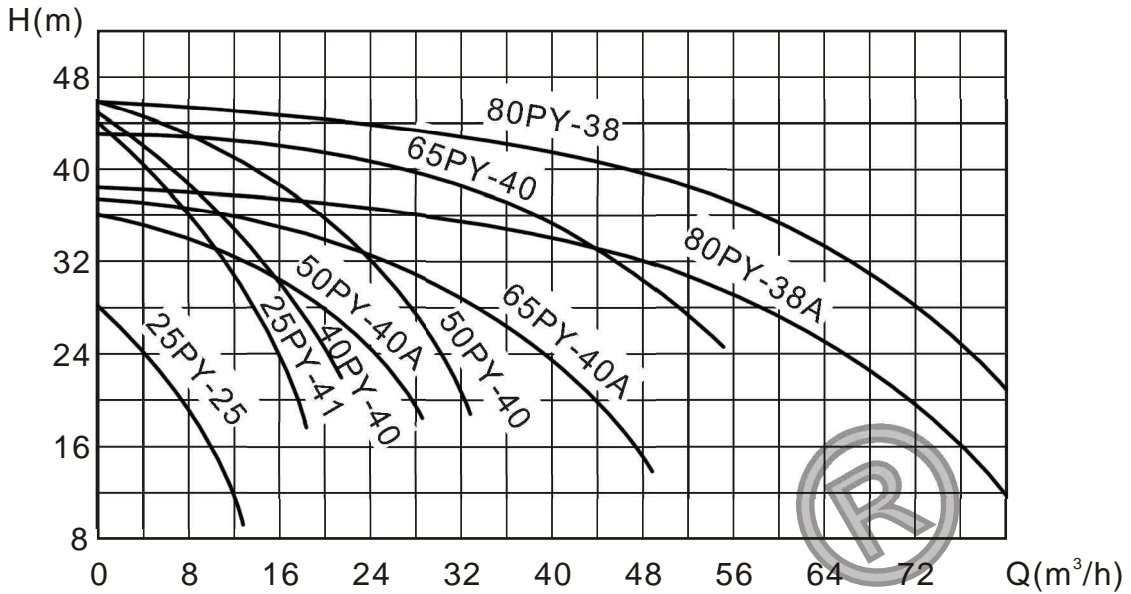
NO	PART NAME	MATERIAL
1	Axle Sleeve	1Cr18Ni9Ti
2	Seal Pad	Fluororubber
3	Spindle	1Cr18Ni9Ti
4	Liner	Filling with polytetrafluoroethylene
5	Attachment Ring	Filling with polytetrafluoroethylene
6	Pump Body	1Cr18Ni9Ti
7	Impeller	1Cr18Ni9Ti

## ◆ SPECIFICATION DATA

Model	Capacity (m <sup>3</sup> /h)	Head (m)	Speed (rpm)	Power (Kw)		Efficiency (%)
				Shaft	Motor	
25PY-25	3.6	25	2900	1.22	3.00	20
25PY-41	3.6	41	2900	2.00	4.00	21
40PY-40	7.2	40	2900	2.60	5.50	21
50PY-40	14.4	40	2900	3.80	5.50	42
50PY-40A	13.1	33	2900	2.80	5.50	40
65PY-40	28.8	40	2900	6.20	7.50	52
65PY-40A	26.2	32	2900	4.60	5.50	50
80PY-38	54.4	38	2900	9.20	15.0	62
80PY-38A	49.0	31.5	2900	6.80	15.0	60

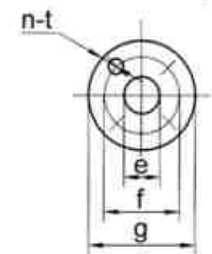
## ◆ PERFORMANCE CHART (2900RPM)

Performance curve for clean water as the fluid (20°C)

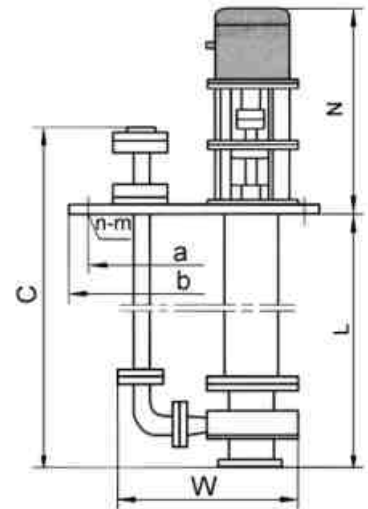
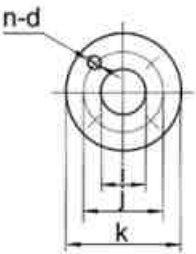


## ◆ INSTALLATION & FLANGE DIMENSION

Outlet Pipe Flange



Inlet Pipe Flange



Model	Overall Dimensions (mm)							Inlet Pipe Flange (mm)				Outlet Pipe Flange (mm)			
	L	C	W	N	φa	φb	n-φm	φl	φj	φk	n-φd	φe	φf	φg	n-φt
25PY-25	1000	1160	410	656	510	560	8-18	25	75	100	4-11	25	100	130	4-14
25PY-41	1500	1660	410	656	510	560	8-18	25	75	100	4-11	25	100	130	4-14
40PY-40	1000	1160	410	838	510	560	8-18	40	100	130	4-11	25	100	130	4-14
40PY-40A	1500	1660	410	838	510	560	8-18	40	100	130	4-11	25	100	130	4-14
50PY-40	1000	1174	410	838	510	560	8-18	50	110	140	4-14	40	110	140	4-14
50PY-40A	1500	1674	410	838	510	560	8-18	50	110	140	4-14	40	110	140	4-14
65PY-40	1000	1187	450	838	510	560	8-18	65	130	160	4-14	50	130	160	4-14
65PY-40A	1500	1687	450	838	510	560	8-18	65	130	160	4-14	50	130	160	4-14
80PY-38	1000	1190	550	1007	650	700	8-18	80	150	185	4-14	65	150	185	4-18
80PY-38A	1500	1690	550	1007	650	700	8-18	80	150	185	4-14	65	150	185	4-18